

CERTIFICATE OF LOCATION OF GOVERNMENT CORNER

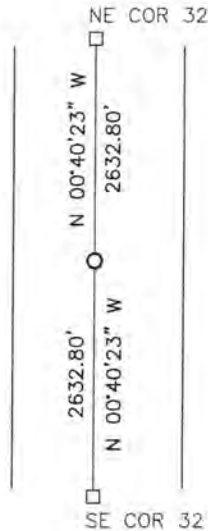
EAST QUARTER Corner of Section 32, Township 108, Range 41, 5TH P.M.

STATE OF MINNESOTA, County of MURRAY

At the corner location shown on the sketch:

- On _____ found a _____
- left monument as found, lowered monument, removed monument (explain)
- On 9/11/15 placed a 5/8" iron with seal #43844

SKETCH OF REFERENCE TIES



Minnesota State Plane Coordinate
System Murray County Datum
NAD83 (1996)

N: 197838.420
E: 495466.395

Statement of evidence relative to this corner location is on back of page.

I hereby certify that this document and the data contained herein was prepared by me or under my direct supervision.

[Signature] 3/22/16
SIGNATURE DATE

Registration No. 43844

- Land Surveyor, Professional Engineer
- County Surveyor, County Engineer

OFFICE OF THE COUNTY RECORDER

County of MURRAY

I hereby certify that this document was filed in the Co. Recorders office at 11:00 A.M on the 18TH day of OCTOBER A.D. 2016

County Recorder Evelyn C. Larson

By _____, Deputy

DOCUMENT NO. _____

Statement of Evidence

In 1861, LGM Fletcher did the original subdivision of the township.

On June 3, 1907, J.W. Woolstencroft recorded a stone at the corner midway and on line between section corners.

September 11, 2015, Bueltel-Moseng Land Surveying set a 5/8" iron with seal #43844 midway and on line between the section corners as established on 1907 survey.